



HARMAN SMART CITY SOLUTION

Driving urban revolution with collective intelligence





Although the objectives of Smart Cities remain the same, the ways to achieve that goal are evolving.

In the pursuit to make cities more connected, better managed, and ‘smarter’, federal organizations seek intelligent solutions for various use cases including smart mobility, smart buildings, and smart utilities. And with the proliferation of IoT devices and people expecting faster, better connectivity, there is an imminent need for newer generation solutions – solutions that allow simplified deployments, ease of management, and citizen-centric functionalities.

But to integrate such solutions with successful retrofitting, redevelopment, and greenfield development of disparate systems, Master System Integrators (MSIs), federal agencies, and other stakeholders need to augment their capabilities. Partnering with the right solution provider can not only address this need but also help meet Smart City objectives faster.

Smart City Solution by HARMAN Connected Services

A market leader in end-to-end Internet of Things (IoT) implementation, HARMAN offers an unmatched portfolio of comprehensive, Smart City Solutions.

Our integrated solutions are designed to transform Smart City aspirations into reality. From LTE/5G enabled smart ecosystems and centrally managed and connected smart utilities to V2X enabled smart traffic/parking/open tolls/lighting systems and video surveillance-enabled smart infrastructure – everything is becoming a reality with immense technology evolution and rapid adoption in last few years. HARMAN’s field-proven, network-grade, and highly scalable IoT platform can integrate all the Smart City Solutions with a central command and control center.

Building Smart Cities of Tomorrow

With over 1200 IoT specialists, 10+ accelerators, and 50+ technology partners across six key IoT verticals, HARMAN is uniquely positioned to support all Smart City initiatives. Decision-makers can focus on maximizing their market opportunity while we architect and implement secure, market-ready solutions at scale.



Product Capabilities

HARMAN's IoT solutions cover System Integration, Sensor, Gateways, Cloud, Connectivity, User Experience, and Analytics Solutions. Furthermore, our standard IoT platform makes it easy to scale the solutions and add new functionalities to the existing infrastructure.



Deployment Capabilities

HARMAN's deployment capabilities include Sensor Placement and Cloud Application Development. The deployment time is significantly reduced as the use cases are developed in the product design phase with 'unboxed' functionalities and analytical value additions.



**Smart
Transportation**



**Smart
Environment**

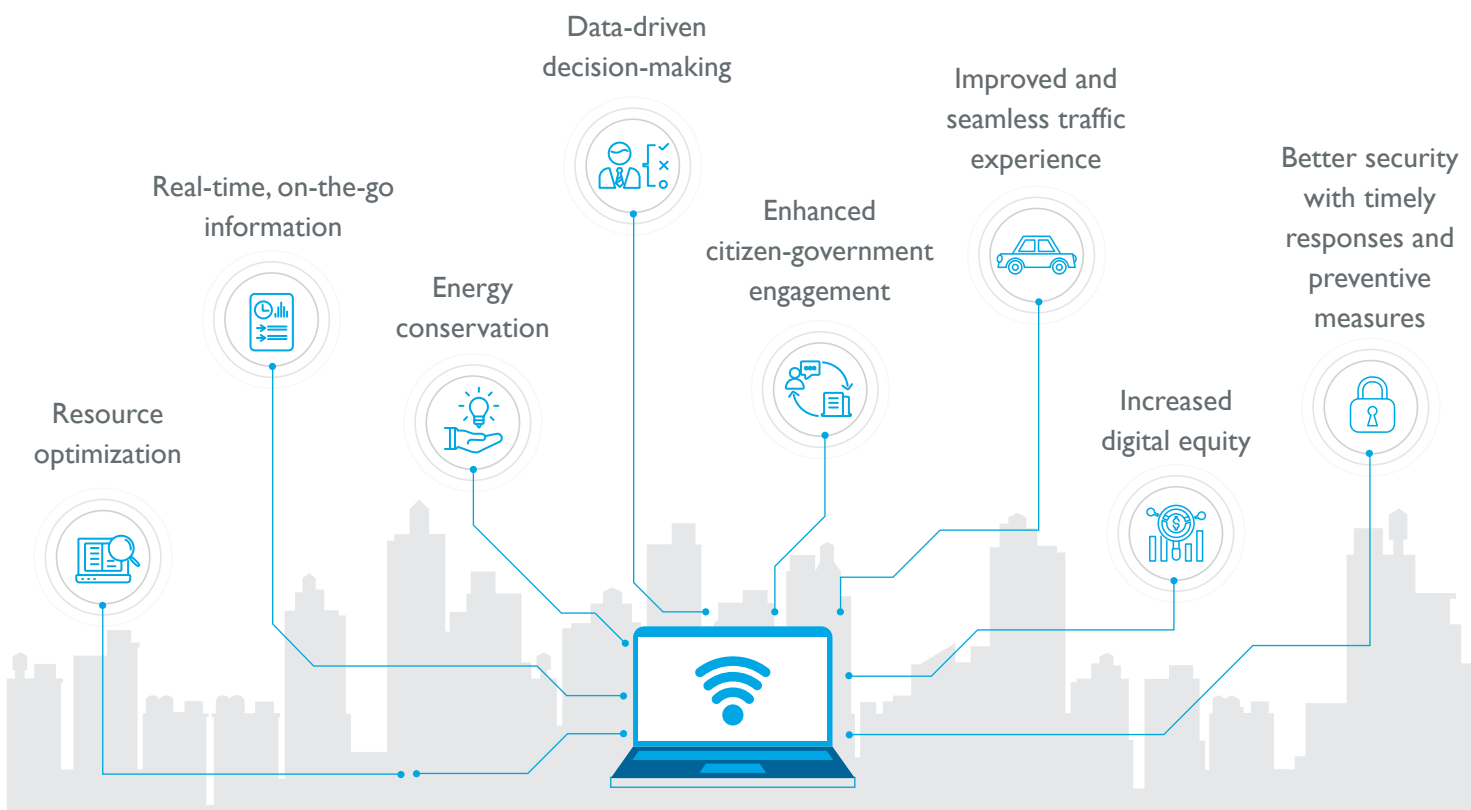


**Smart
Infrastructure**



**Smart
Venues**

Better Connectivity, Networking, and Collaboration



Optimized Guidance for Event Attendees

5G connected vehicles and phones at any event can use HARMAN's advanced Road Side Units (RSUs), a 5G/V2X enabled edge compute device, designed to function as 5G hubs for mass data transfer and communication. This would not only improve safety but also boost efficiency on the roads. The solution can be used to guide attendees to pre-allocated parking spots that are smartly selected based on individual seating areas.

Traffic Management with Predictive Growth Models

V2I, V2V, and Harman's RSU-to-RSU communication can be enabled to create holistic data flow between vehicles, RSUs, and other infrastructure. Authorities can provision and control traffic violations of speed, red lights, wrong direction, and others with a user-friendly dashboard. Additionally, ERT vehicles can have priority pass through various intersections without disrupting the flow of traffic.

With growing populations and push for smarter cities in the future, analytics becomes the key to predict the flow of traffic and collect data that is necessary for planning a better future.

Use of Analytics can help predict the changing traffic and volumes for future, enabling city administration to plan well in advance for the cities of tomorrow.

HARMAN – Accredited As The Best



Consistently Rated as LEADER for the last 3 years in Overall IoT services



Consistently rated as LEADER in IoT Technology services for the last 4 years



Recognized in the Winner's Circle for IoT Services in 2018, 2016, 2015



Rated as an INNOVATOR in 2020 and a Disruptor in 2019 for Internet of Things Services RadarView™

Shift to smart solutions and intelligent interconnectedness, today!

[Know More](#)

ABOUT HARMAN

HARMAN (harman.com) designs and engineers connected products and solutions for automakers, consumers, and enterprises worldwide, including connected car systems, audio and visual products, enterprise automation solutions; and services supporting the Internet of Things. With leading brands including AKG®, Harman Kardon®, Infinity®, JBL®, Lexicon®, Mark Levinson® and Revel®. HARMAN is admired by audiophiles, musicians and the entertainment venues where they perform around the world. More than 50 million automobiles on the road today are equipped with HARMAN audio and connected car systems. Our software services power billions of mobile devices and systems that are connected, integrated and secure across all platforms, from work and home to car and mobile. HARMAN has a workforce of approximately 30,000 people across the Americas, Europe, and Asia. In 2017, HARMAN became a wholly-owned subsidiary of Samsung Electronics Co., Ltd.

© 2020 HARMAN International Industries, Incorporated. All rights reserved. Harman Kardon, Infinity, JBL, Lexicon and Mark Levinson are trademarks of HARMAN International Industries, Incorporated, registered in the United States and/or other countries. AKG is a trademark of AKG Acoustics GmbH, registered in the United States and/or other countries. Features, specifications and appearance are subject to change without notice.

Reach us on

