

PRESENTING

HARMAN
Amplify

WORLD'S FIRST SMART SMALL CELL

Unique convergence of LTE Small Cell,
Digital Voice Assistant & IoT



Innovation Award Honoree,
Smart Home category in
CES, Las Vegas 2019



**Nominee for "Best Connected
Consumer Device"** category at GLOMO
Awards – MWC, Barcelona 2019



Judges' Choice - SCF
Small Cell Awards 2019



Powered by HARMAN Amplify

FEATURES



Modern design

Premium design to aesthetically complement modern home decor

Includes HARMAN Embedded Audio

Far field microphone tech, with noise & echo cancellation
Hi-Fidelity Harman Kardon audio experience



Alexa Voice Assistant

Commercial Voice Assistant platform to integrate voice assistant capabilities

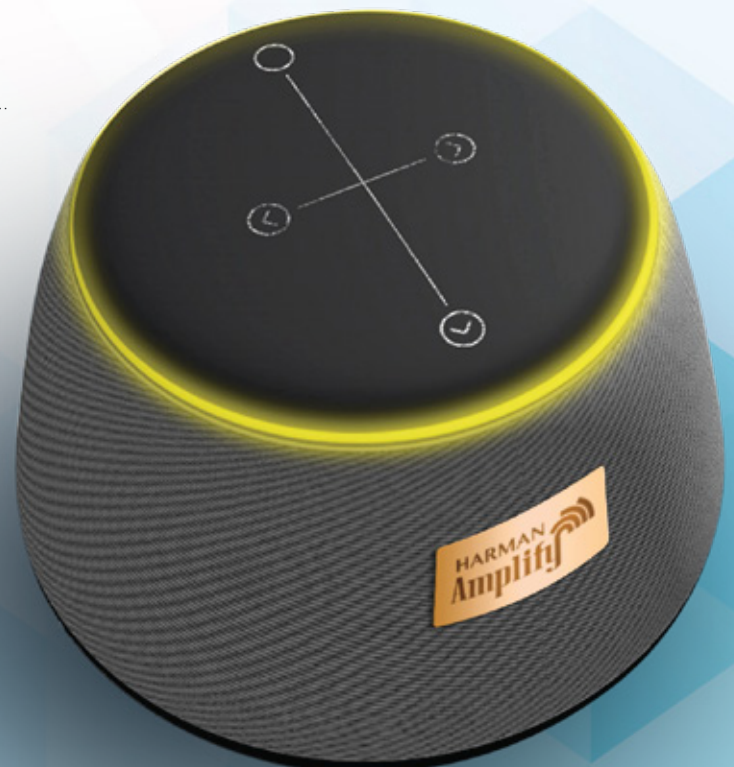
Smart Home functionality

HARMAN IoT Gateway technology to enable home automation



LTE Femto Cell and Relay

LTE Femto for access network; Option of UE-Relay or WiFi for backhaul



BENEFITS

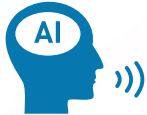


Simple un-boxing, set up and user experience

Easy to operate with a zero touch install, intuitive voice guided support and user-friendly app.

Increased network coverage

Small cell feature offering enhanced coverage capability with LTE and Wi-Fi backhaul thus boosting network and enhancing user experience



AI enabled conversation

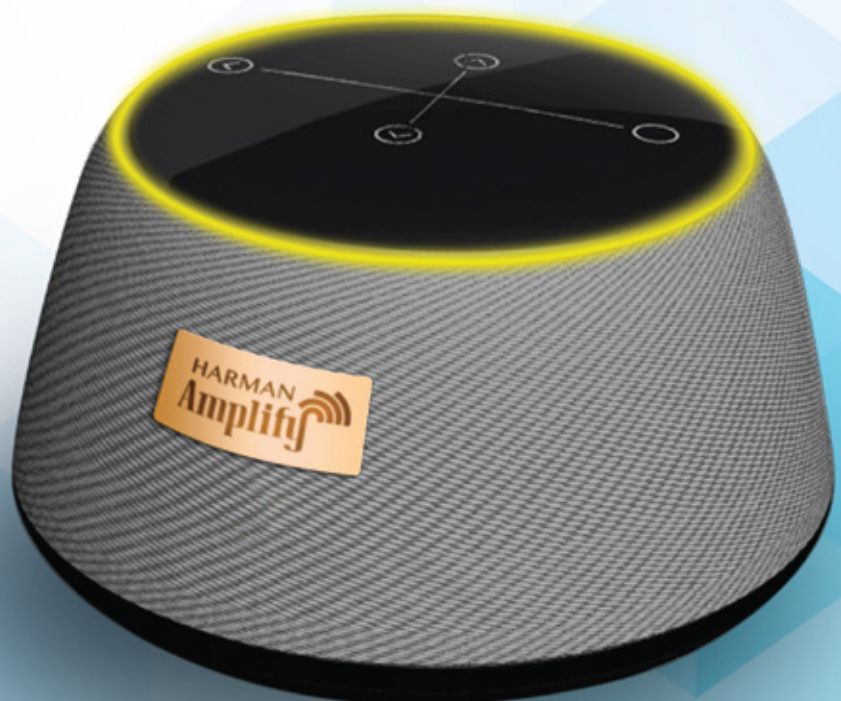
Offers Alexa as a voice assistant with Harman Kardon premium sound, water proof electronics, noise & echo cancellation, making it apt for use both outdoors or indoor

Home automation

Smart Home automation for greater ease and enhanced experience



Connect with us to know more



TECHNICAL SPECIFICATIONS

Key Components	Specifications
LTE Relay Backhaul	LTE Band 25 (2T8R), Band 41 (4T8R) and Wi-Fi Back Haul
LTE Femtocell	Band 41 , VoLTE Support
IoT	HARMAN IoT Gateway design based on dual core processor and integrated connectivity & IoT security
OS	Linux – Ubuntu
Voice Assistant	Alexa
Bluetooth / BLE	4.2
Wi-Fi	2.4 and 5 GHz (b//g/n)
Zigbee	Integrated ZigBee
GPS	Yes
Speaker / Mic	Harman Kardon quality (2x 8W Speaker) 3-microphone HARMAN MEMS Microphones
Power	DC Power
Certification	FCC, CE, UL

Connect with us to know more

ABOUT HARMAN

HARMAN (harman.com) designs and engineers connected products and solutions for automakers, consumers, and enterprises worldwide, including connected car systems, audio and visual products, enterprise automation solutions; and services supporting the Internet of Things. With leading brands including AKG®, Harman Kardon®, Infinity®, JBL®, Lexicon®, Mark Levinson® and Revel®, HARMAN is admired by audiophiles, musicians and the entertainment venues where they perform around the world. More than 50 million automobiles on the road today are equipped with HARMAN audio and connected car systems. Our software services power billions of mobile devices and systems that are connected, integrated and secure across all platforms, from work and home to car and mobile. HARMAN has a workforce of approximately 30,000 people across the Americas, Europe, and Asia. In 2017, HARMAN became a wholly-owned subsidiary of Samsung Electronics Co., Ltd.

© 2019 HARMAN International Industries, Incorporated. All rights reserved. Harman Kardon, Infinity, JBL, Lexicon and Mark Levinson are trademarks of HARMAN International Industries, Incorporated, registered in the United States and/or other countries. AKG is a trademark of AKG Acoustics GmbH, registered in the United States and/or other countries. Features, specifications and appearance are subject to change without notice.

