



HARMAN'S Safe Return-to-Work Solution



Around **88% of businesses** across the globe had to mandate work from home for their employees at the onset of the COVID-19 pandemic in March 2020.

Now, with organizations resuming office operations, it certainly won't be business as usual. Bringing back the workforce, albeit in a staggered and limited way, involves a wholly reimagined work environment.

With that, the new item on the agenda is having a reliable system in place to ensure workplace health, safety & a real-time data based emergency response solution.

What's more?

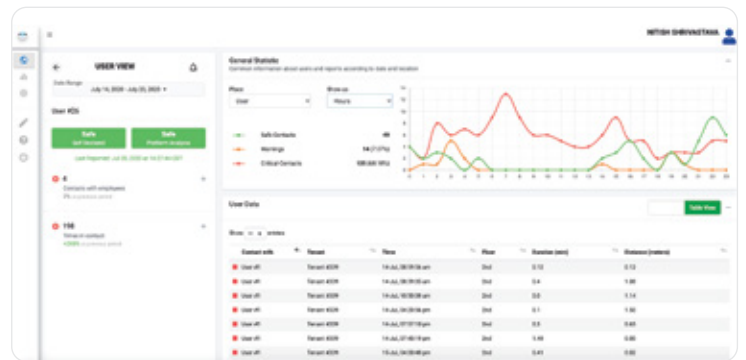
Active accounting and disseminating timely information for the welfare of each and every employee entering the office building is the need of the hour.



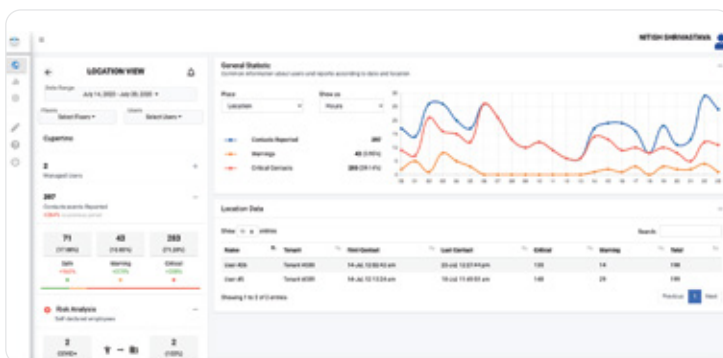
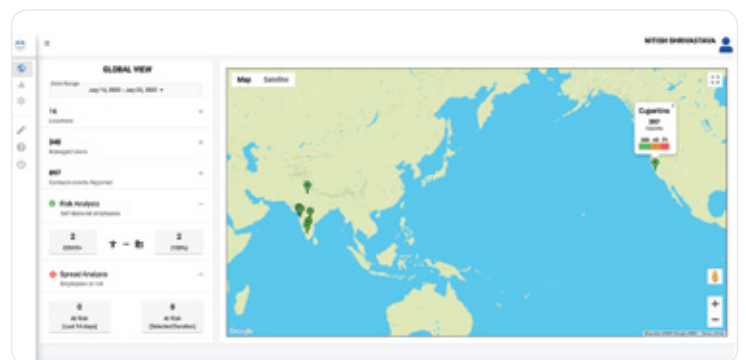
Shield your Company from the Inside and Outside

In response to this need for a workplace tracking system that prioritizes employee safety, HARMAN built AccuAlertMe.

AccuAlertMe is an employee movement tracking and secure contact tracing platform. It comprises Android and iOS APPs for the end-user and a dashboard for HR managers and campus administrators.

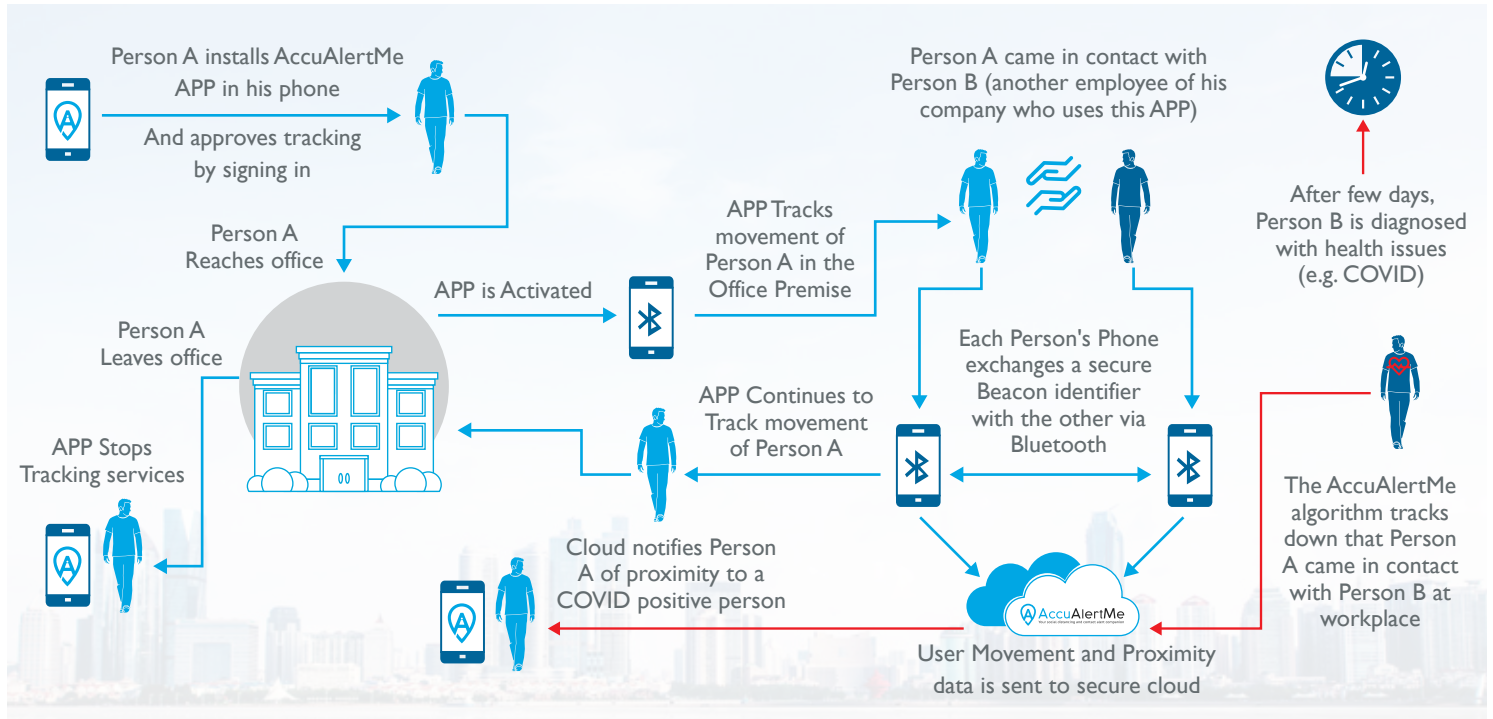


By recording employees' entry and exit information, movement coordinates, and proximity data while within the office premises, AccuAlertMe helps employees comply with social distancing protocols. AccuAlertMe does not monitor or store any kind of personally identifiable employee data – it respects employee privacy while maintaining employee safety.



Balance Employee Safety and Data Security

- Geo-fenced Tracking
- Proximity Sensing and Identification
- Contact Tagging with Coordinates
- Compliance to Privacy and Security
- Contact Duration Capturing
- Enterprise-Specific Data Rules
- Battery and Data Friendly
- Configurable Report Generation



Protect your Employees Now

Simplified Onboarding

- Organization's user directory can be linked to HARMAN's CASTANET platform for automating enrolling
- Alternatively, an internal e-mail campaign with the verification link can be sent to all employees

Personalized Rule Engine

- Tenant with an administrator account on HARMAN's CASTANET
- Define tracking rules along with APP and reporting preferences



Rapid Deployment

- Select a pilot location or facility and finalize the number of devices/employees
- Begin trials and scale-out across your business

Customized Solution

- The Community Edition is free of cost and can be used by government organizations
- For OEMs, the solution comes with a customizable SDK for integration into platforms and APPs

Proactive and Reactive Contact Tracing

- Admins can review daily/weekly data for groups or individuals
- Employees can trace contacts and define alerts and notifications

Check out more highlights

One Solution for All



Employees

View data for a week/month/year

Check locations visited and duration spent

See the list of users who came in contact and duration



Administrator

Check visitors entering and exiting the facility

View multi-level contact tracing details

Generate automated reports and alerts on protocol breaches & health of a particular facility



Restart your Operations Today



Healthcare



Manufacturing



Travel & Hospitality



IT & ITES

[Click to know more](#)

[Schedule a Demo](#)

ABOUT HARMAN

HARMAN (harman.com) designs and engineers connected products and solutions for automakers, consumers, and enterprises worldwide, including connected car systems, audio and visual products, enterprise automation solutions; and services supporting the Internet of Things. With leading brands including AKG®, Harman Kardon®, Infinity®, JBL®, Lexicon®, Mark Levinson® and Revel®. HARMAN is admired by audiophiles, musicians and the entertainment venues where they perform around the world. More than 50 million automobiles on the road today are equipped with HARMAN audio and connected car systems. Our software services power billions of mobile devices and systems that are connected, integrated and secure across all platforms, from work and home to car and mobile. HARMAN has a workforce of approximately 30,000 people across the Americas, Europe, and Asia. In 2017, HARMAN became a wholly-owned subsidiary of Samsung Electronics Co., Ltd.

© 2020 HARMAN International Industries, Incorporated. All rights reserved. Harman Kardon, Infinity, JBL, Lexicon and Mark Levinson are trademarks of HARMAN International Industries, Incorporated, registered in the United States and/or other countries. AKG is a trademark of AKG Acoustics GmbH, registered in the United States and/or other countries. Features, specifications and appearance are subject to change without notice.

Reach us on

