

HARMAN'S CONNECTED CAR CYBER-SECURITY SOLUTION

Buckling up to protect connected cars from cyber-threats

Connected cars, and the online benefits they are bound to offer represent a unique opportunity for the entire automotive industry. At the same time, adapting from a purely mechanics-oriented world to a digital landscape of connected in-vehicle software and applications also brings significant security-related challenges.

How does one fully protect the connected car of tomorrow? HARMAN a leading automotive software management solutions provider, presents OEMs and Tier-1 suppliers with the answer to this question, with its uniquely comprehensive Connected Car Cyber-security technology and services offering.

HARMAN's Connected Car Cyber-security offers the perfect balance in security management. Our security and cybercrime experts can help you make the right decisions so as to capitalize on technological innovation and tackle any cyber challenge, all while minimizing exposure and countering real threats to critical automotive assets – cost-effectively and with complete standards and regulatory compliance.



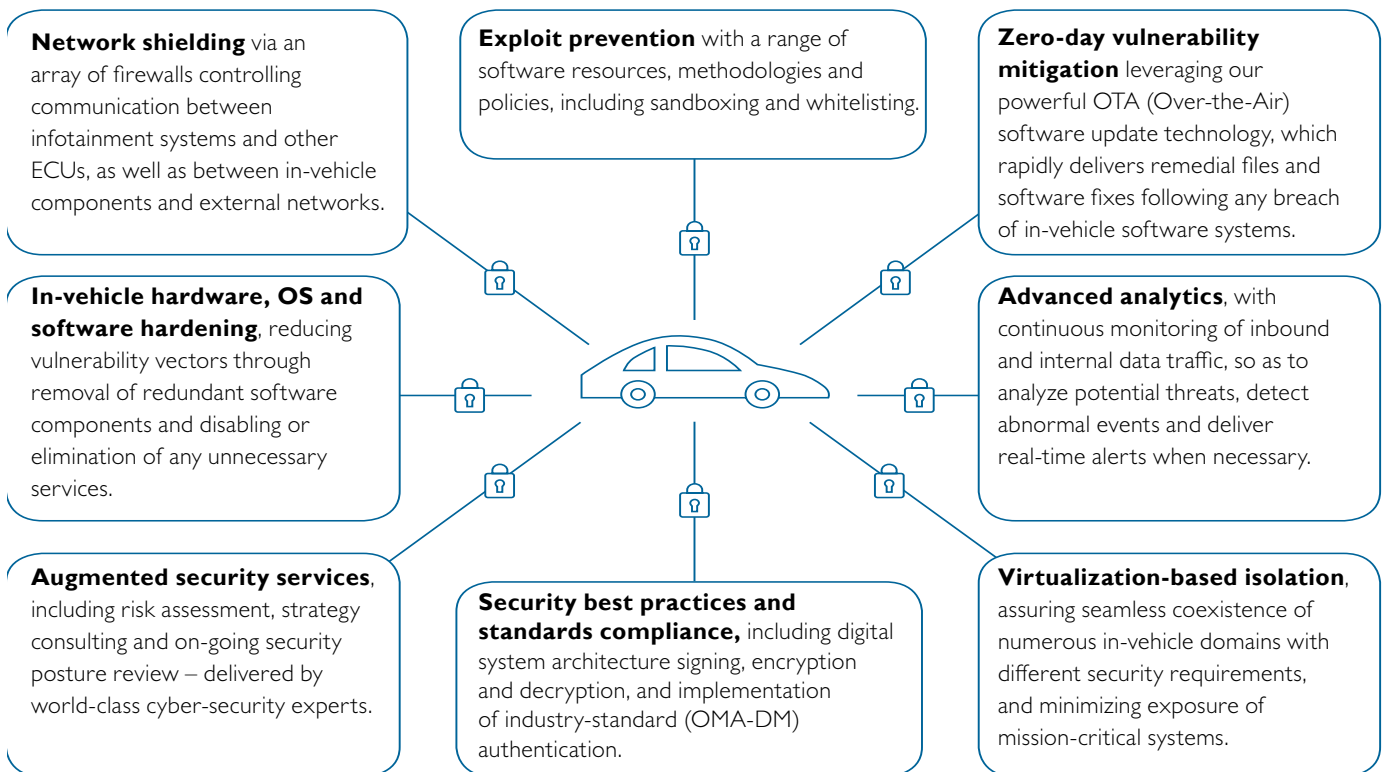
Key Benefits

- Complete security coverage with in-vehicle systems hardened by a multi-layered mix of advanced firewall, virtualization and other cyber-security technologies, backed by expert security consulting services
- Reduced cyber risks and related costs via ongoing penetration testing, and detection and mitigation of vulnerabilities on the basis of deep cybercrime know-how
- Rapid recovery from any potential breach through instantaneous software and configuration updates
- Turnkey implementation based on deep familiarity with connected car architecture and systems design

The emerging connected car will require manufacturers to manage a diverse range of in-vehicle hardware and software assets, including network connectivity, operating

systems, applications and services. They'll have to integrate infotainment, ADAS and digital cluster components – all loaded with tens of millions of lines of code – and fully isolate internal network infrastructure (such as the CANBus) from external networks and other potentially unsafe software resources, so as to maintain maximum resilience to threats in critical automotive systems. Cyber-security will clearly be at the very top of their agenda.

HARMAN's Connected Car Cyber-security provides the new proficiencies needed to successfully realize this transformation. A robust, multi-layered solution comprising cutting-edge technologies, innovative products and expert consulting services based on profound cybercrime know-how, it allows car manufacturers to gain competitive advantage with connected car innovations, as well as the peace of mind of constantly being able to stay several steps ahead of potential threats.



Partner with an industry expert

HARMAN Connected Services, a leader in software design and development, helps global brands dramatically reduce time-to-market while improving quality and productivity. Our end-to-end software engineering, IoT and data analytics services enable the world's top automotive, mobile and communications and software-enabled businesses drive innovation-led growth.

Visit us at www.harman.com

